

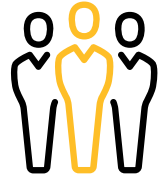
*Wyebot Proposal  
Exclusively for:  
Turner Unified School District*



October 5, 2023

wyebot™

# Wi-Fi Market Dynamics



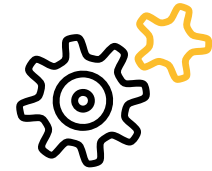
---

MULTIPLE DEVICES  
PER PERSON



---

WI-FI TECHNOLOGY  
EVOLUTION



---

LIMITED IT STAFF  
AND BUDGET



---

MULTI-MEDIA  
SERVICES



---

INCREASING NUMBER  
OF CLOUD  
APPLICATIONS



---

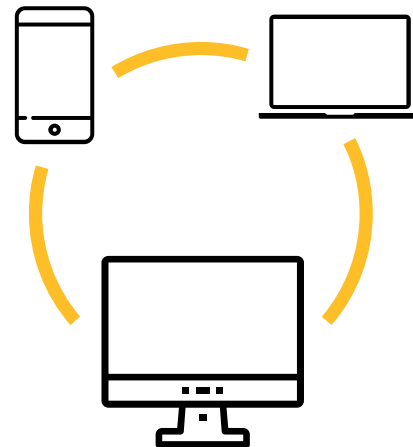
INTERNET OF  
THINGS (IOT)

## What Does WyeBot Do

We Monitor your Mission Critical Wireless Environments and **Deliver Notifications and Automatic Solutions** before they Cause Disruption to your Business and Customers

---

**WYEBOT WATCHES ALL CONNECTIONS TO SUPPORT THE IOT REVOLUTION**



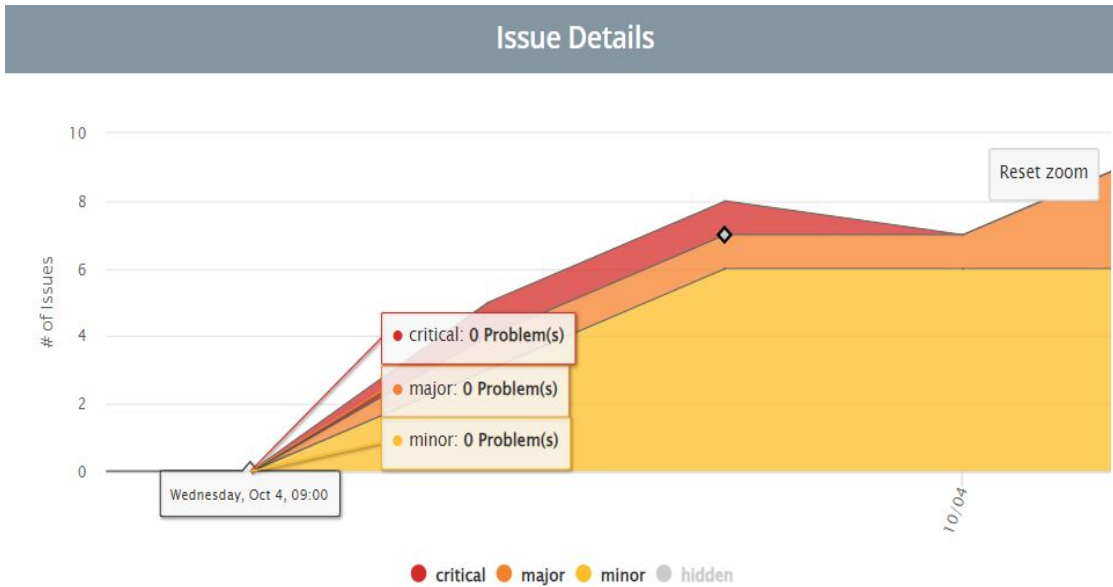
Business  
Return on  
Investment:

Reduce Mean Time To Resolution (MTTR) By **Up To 90%**

Eliminate **Up To 80%** Of Remote Site Visits

Cut WiFi Trouble Tickets By **More Than 70%**

Valuable End User **Quality Metrics**



(Data as of Wednesday, Oct 04, 11:00)

Tip: Click and drag in graph to zoom

Problem	Solution
● High amount of broadcast/multicast traffic detected	There can be several factors which contribute to high levels of broadcast/multicast traffic. MDNS traffic from client d...
● Neighboring access points are using the same channel.	Move access points to free channels and/or reduce channel width.
● WiFi client retransmission percentage is too high.	Temporarily high retransmission rates can be normal for wireless clients. However if these clients continue to show high...
Total: 8 issue(s) ● Critical: 1 ● Major: 1 ● Minor: 6 ● Hidden: 2	



- Management
- Turner Unified Schoo... >
- My SSIDs
- Device Forensics
- Network Tests
- Advanced
- Sensor Config

### Issue Detail Show Historical Data

Problem	Solution
Legacy 802.11b data rates may be negatively affecting network performance.	Lower data rates take more airtime to transmit and can lead to higher channel utilization. Change access point configur...
Neighboring access points are using the same channel.	Move access points to free channels and/or reduce channel width.
Client was disconnected from access point.	The access point disconnected the client(s) with the reason shown above.
Non-WiFi interference detected.	Locate and remove any devices causing non-WiFi interference.
WiFi enabled printers detected.	If you are not using the wireless direct feature of your printer, you can shut off WiFi on the listed printers to reduce...

Total: 5 issue(s)   Critical: 0   Major: 2   Minor: 3   Hidden: 1

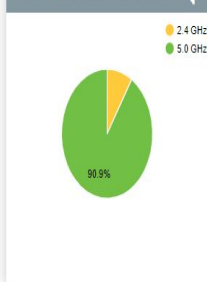
### Access Points (14)



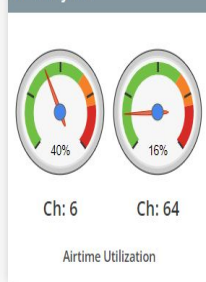
### WiFi Clients (11)



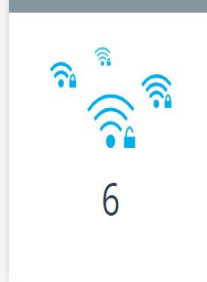
### WiFi Client Distribution



### RF Analytics



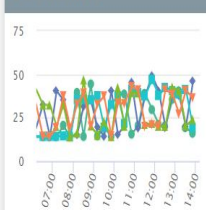
### WiFi Networks



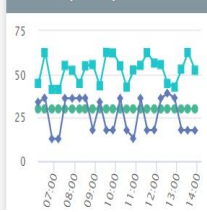
### Events



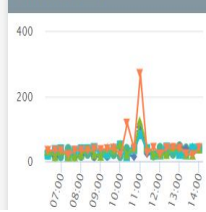
### Chromebooks



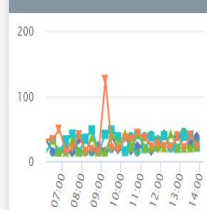
### Internet (Wired)



### Chromebooks



### Chromebooks



### G-Suite





## Infinite Campus

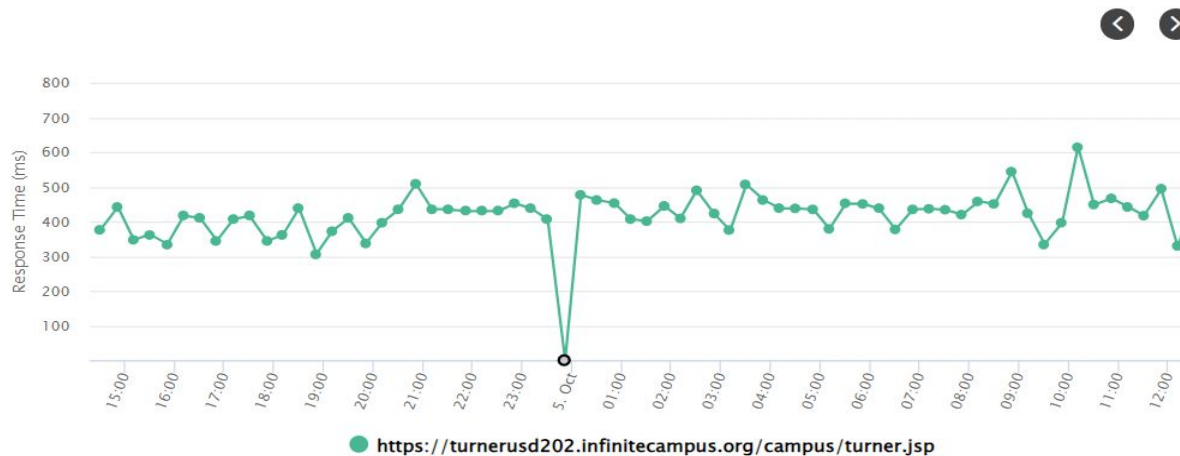


### Chart Options

Past Day
  Past Week
  Past Month

### Graph Type

Response Time ▾



	Scheduled Time	Sensor
●	2023-10-04 23:50:00	<b>AM45027644</b>  <b>General</b> _____  <b>Test Type:</b> Application <b>Start Time:</b> 2023-10-04 23:51:40 <b>Duration:</b> 13.289 seconds



Wyebot Inc,  
2 Mount Royal Avenue, Suite 310,  
Marlborough, MA 01752

## Quotation

Date	Quote #
Oct 5, 2023	5005b

Customer Address
Turner Unified School District #202 800 South 55th Street, Kansas City, KS, USA

Quote Valid Until	Rep	470#: 230023807				
6/30/24	VPATINHA	496 ID (aka SPIN) :143050718				
SKU	Description	Qty	Unit Price	Amount	Discount	Total
L-1003-N0	Wyebot WIP™-enabled Sensor with 3-year Service License	25	\$6,000.00	\$150,000.00	60.00%	\$60,000.00
	<b>USAC Billing: Choice of SPI or BEAR</b> USAC Sub-total (80%) Customer Sub-total (20%)			\$48,200.00		\$12,050.00
<b>Terms &amp; Conditions</b>				<b>Subtotal</b>		
1. The quote is firm and will not be withdrawn for a period of sixty (60) days after the Schools and Libraries Division issues its Funding Commitment Decision Letter to the applicant's appropriate Form 471 for Funding Year 2023 2. To accept the quote, please send a P.O. for the quote amount, including Quote #, or sign below. 3. This is an auto-renewal subscription unless Wyebot is notified and the sensor is returned within seven days of the subscription end date. 4. Sales Tax (if applicable), is the customer's responsibility.				<b>Shipping</b> \$250.00 <b>Total</b> <b>\$60,250.00</b>		